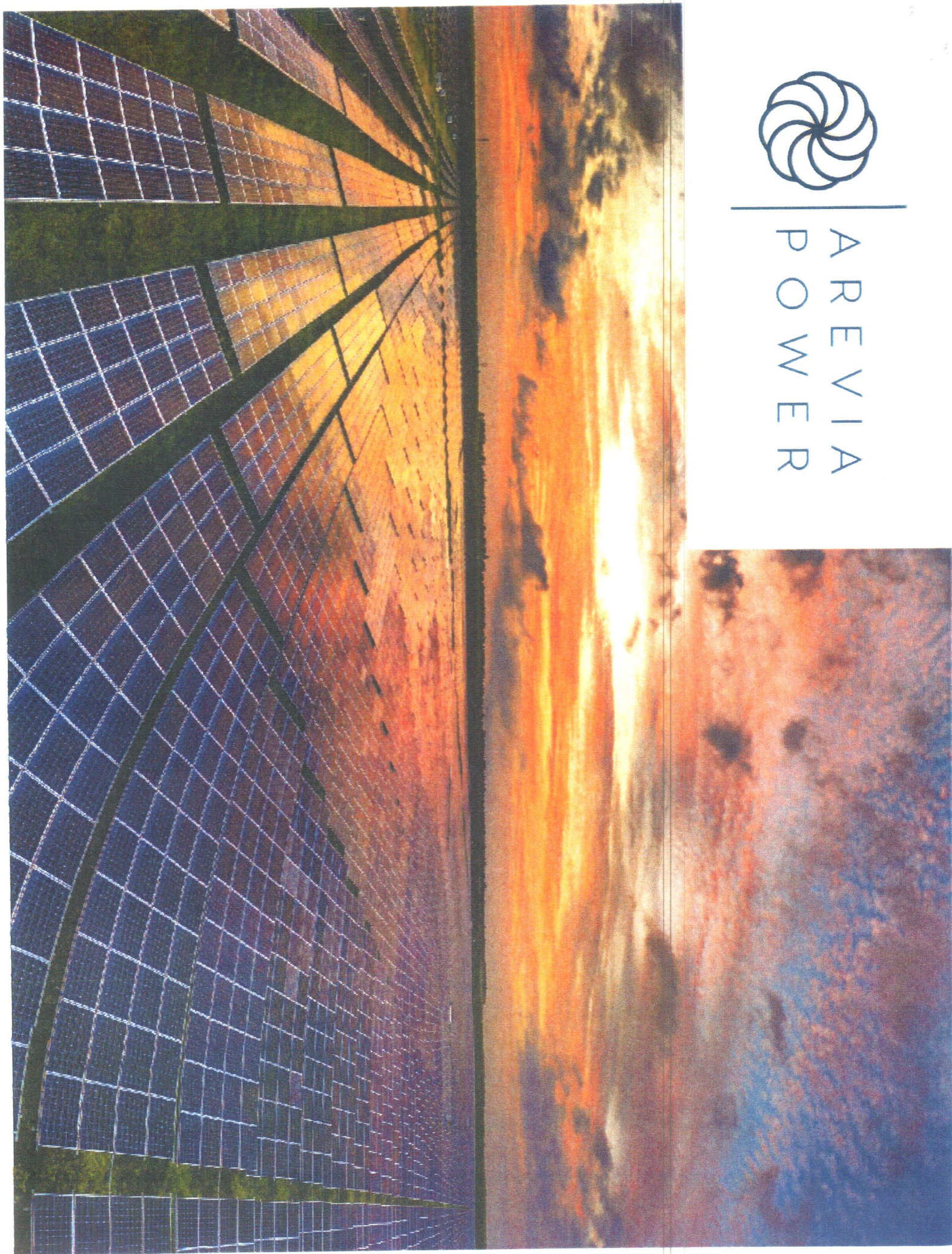


AREVIA
POWER



AREVIA POWER OVERVIEW

American Founded, Owned & Controlled Company

- American Start-up Story - Worked on nights and weekends. Raised money from family and friends
- Founded in Dec-2016 and by June-2019 had contracted largest solar + battery project in country

The Numbers: 12 GW Pipeline Across the US, Primarily in the West

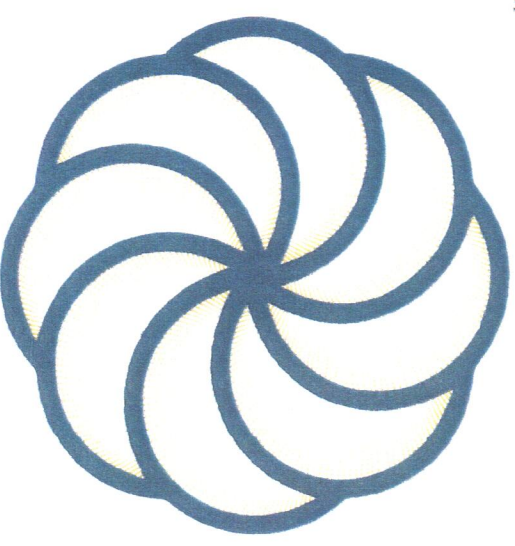
- Have fully developed and sold over 3GW of projects, equaling \$3.8B since company inception
- Currently have 3 GW of executed Interconnection

Community First Developer

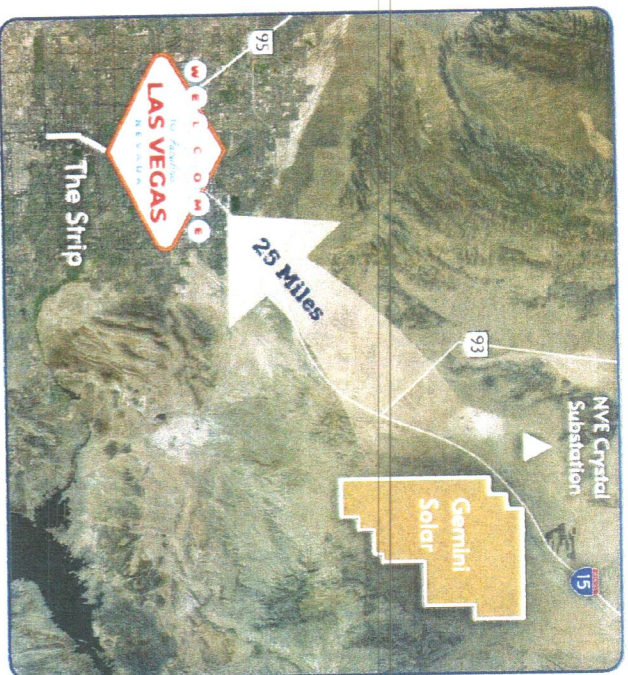
- In each of its developed projects, we have created multi-million dollar development agreements where local businesses were employed, shared infrastructure was built and then fully utilized by neighbors after construction, and training was deployed for local interested residents
- Arevia has also negotiated direct investments made into the community

Core Competency: Permitting on Federal and State Lands, NEPA Process

- We have permitted over 15,000 acres on BLM land
- Currently have site control / exclusive rights on > 200,000 acres of federal land



TRACK RECORD



GEMINI SOLAR

Project Summary

Size

- Solar: 690 MW_{ac} / 955 MW_{dc} | Storage: 380MW / 1,416 MWh

- Acres: 7,000

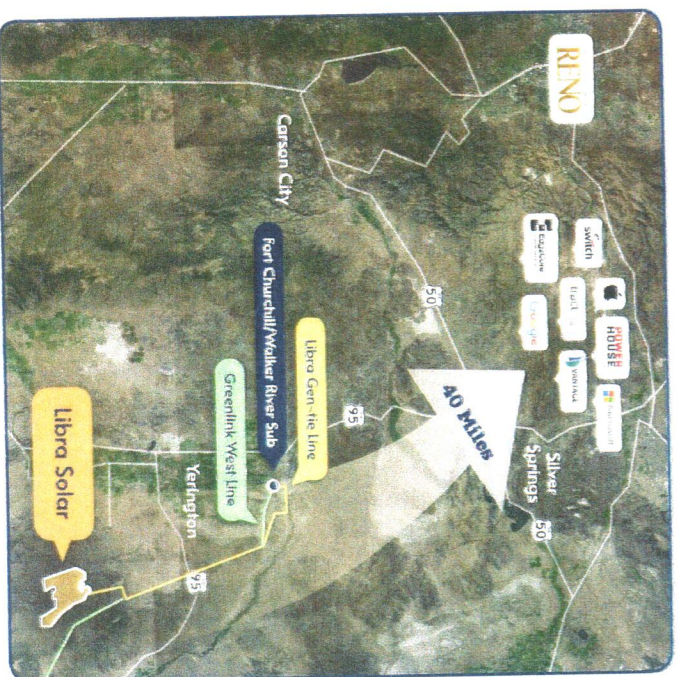
- Total Cost: \$1.6B

Location

- Adjacent to Moapa Band of Paiutes Reservation

Impact

- Invested \$21M in community benefits for the Moapa Band of Paiutes, including roads, water infrastructure, and community buildings
- 1,000 construction jobs were supported per year
- 300,000 homes power output displaces 1.5 million metric tons of CO₂ per year



LIBRA SOLAR + BESS

Project Summary

Size

- Solar: 700 MW_{ac} / 915 MW_{dc} | Storage: 700MW / 2800MWh

- Acres: 5,400

- Total Cost: \$2.1B

Location

- Mineral County and Lyon County, NV

Impact

- Invested \$10.5M in community benefits supporting Mason Valley Fire District, Lyon County Sheriff's Department, Rural Medevac Alliance, Lyon County Capital Improvement Fund, Lyon County School District
- 1,100 construction jobs were supported per year
- 300,000 homes power output displaces 1.7 million metric tons of CO₂ per year

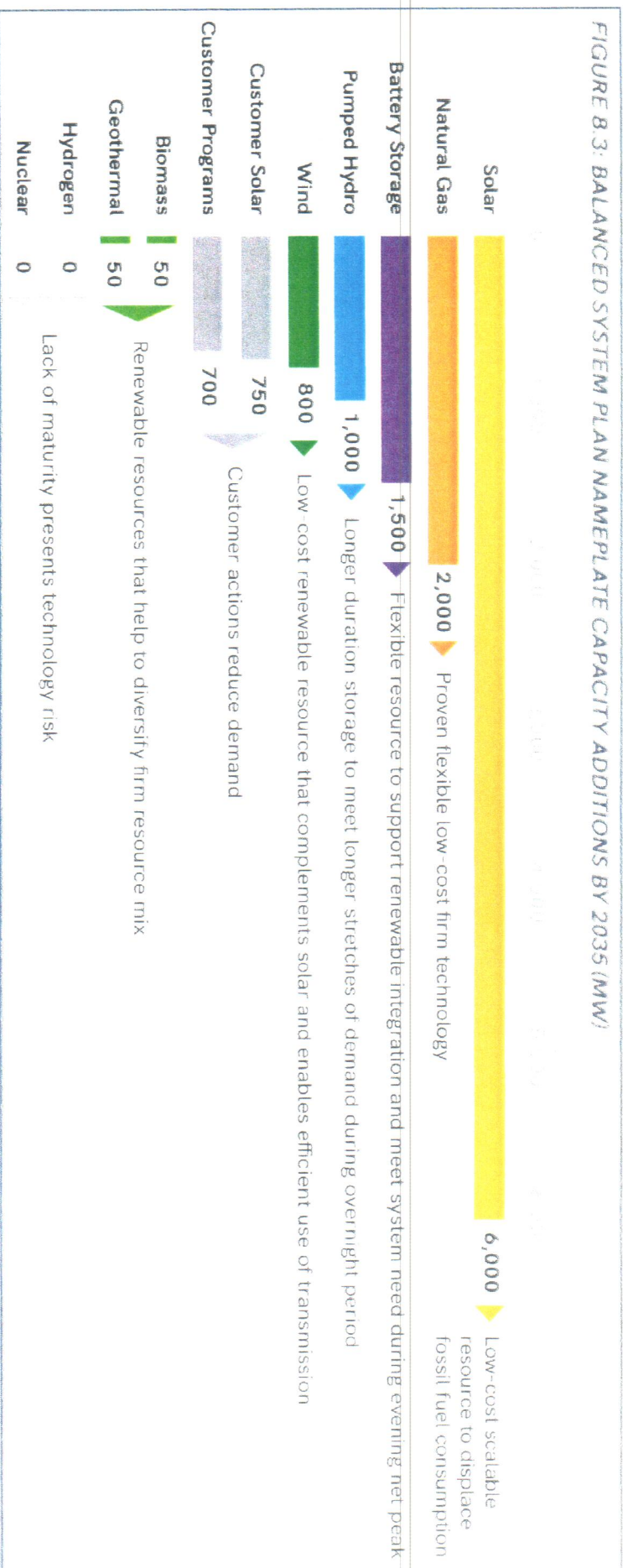
SRP IS GOING TO **DOUBLE** OVER THE NEXT TEN YEARS



WHY SILVER KING SOLAR IS NEEDED



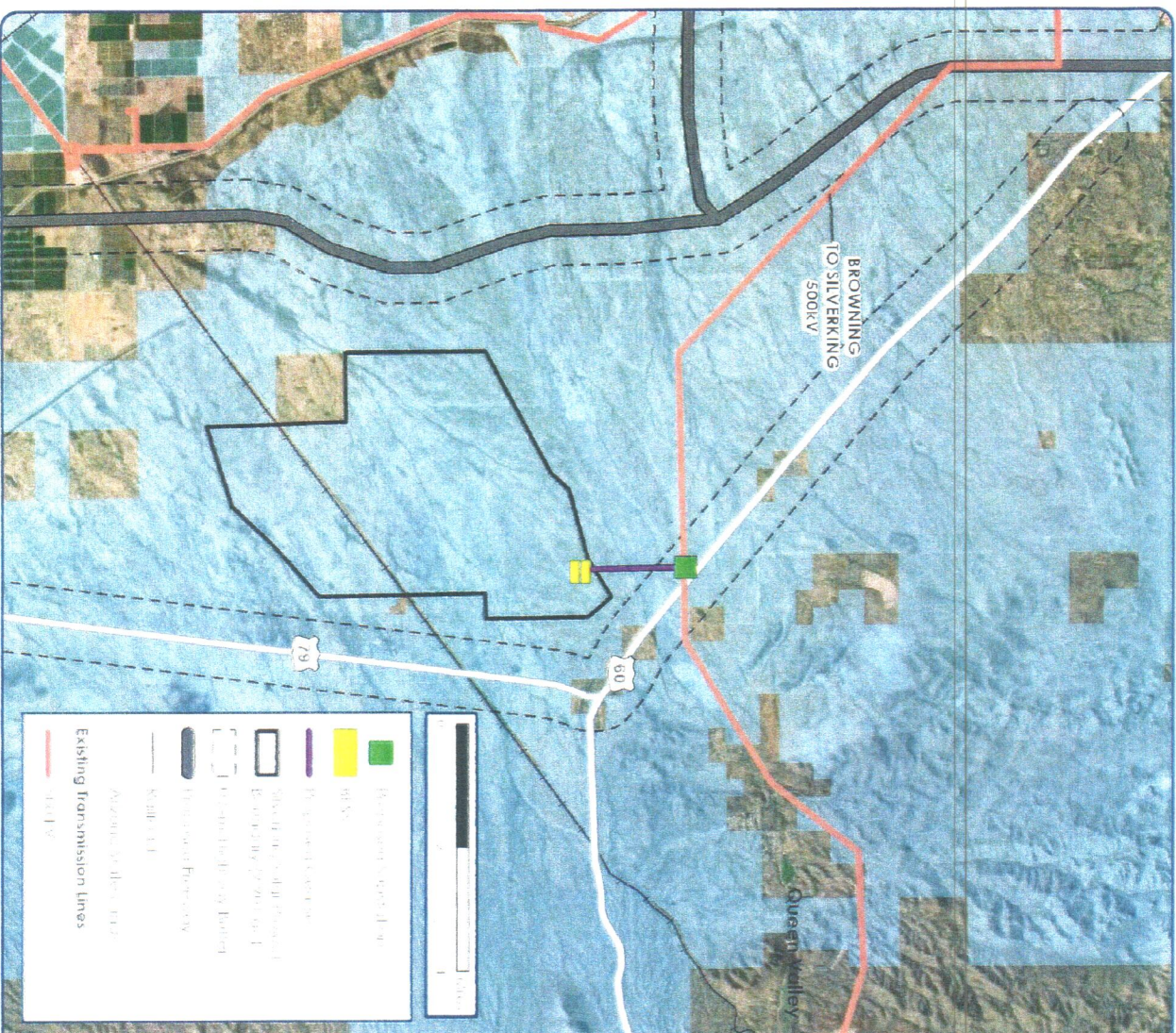
FIGURE B.3: BALANCED SYSTEM PLAN NAMEPLATE CAPACITY ADDITIONS BY 2035 (MW)



- SRP is projected to grow by >12GW per its approved Integrated System Plan. The majority of this growth is slated for the East Valley, with **Pinal County expected to attain ~30% of the load growth** to support commercial uses (i.e. advanced manufacturing and data centers)
- Each phase of the Silver King buildout will address a significant portion SRP's long-term need over the next 10 years - all next to the highest growth and most congested area in SRP's system
- The Silver King Solar Project is complementary to SRP's gas plants located in Pinal County. It will reduce current system congestion along the Pinal and Maricopa county border
- Silver King will help reduce fire risk that is created by importing power from Springerville and St Johns (Colorado) due to its proximity to the most congested area in SRP's system

The energy provided by Silver King will help maintain the local grid and attract and retain the jobs in advanced manufacturing and high-tech firms projected by SRP for Pinal County

SILVER KING SOLAR + BATTERY PROJECT



Location

Eastern Edge of Superstition Vistas – west and southwest of Hwy 60 and Hwy 79

Fourpin

9,500 acres of State Trust Land, the Buikable acreage will be 10th to 30th less

Construction Start

2027 / 2029 - 2031

Permitting

CEC from ACC and Major Comprehensive Plan
Amendment from Pinal County

Minimal Water Use

25 acre-feet per year during operations, 700 acre-feet per year during construction

Viewshed

New simulations are being conducted; topography of the area and 0.5-mile setbacks from highways = minimal to no viewshed impact

Temporary Use / Housing

Land Advisors commissioned report does not show suitability for housing development over next 35+ years

ARIZONA ECONOMIC IMPACT (ROUND'S CONSULTING)

The low-cost, fixed-price energy from Silver King Solar will attract and retain jobs from high-value industries such as advanced manufacturing and tech

The project will help avoid blackouts and brownouts while removing 2.9M metric tons of CO₂ per year

\$2.8B

Total expected capital expenditures for the project

1,000

Number of direct and indirect jobs created **per** year during construction

\$94.3M

In total tax revenues to **Pinal County** over 40 years

\$700M

Total labor income to workers over the 40-year period: wages, salaries, and benefits paid to employees

\$443M

Total direct and indirect tax revenues over 40 years, benefiting various public entities **throughout Arizona**

CONTACTS:

Mark Boyadjian

MARK@AREVIAPOWER.COM

917-653-8116

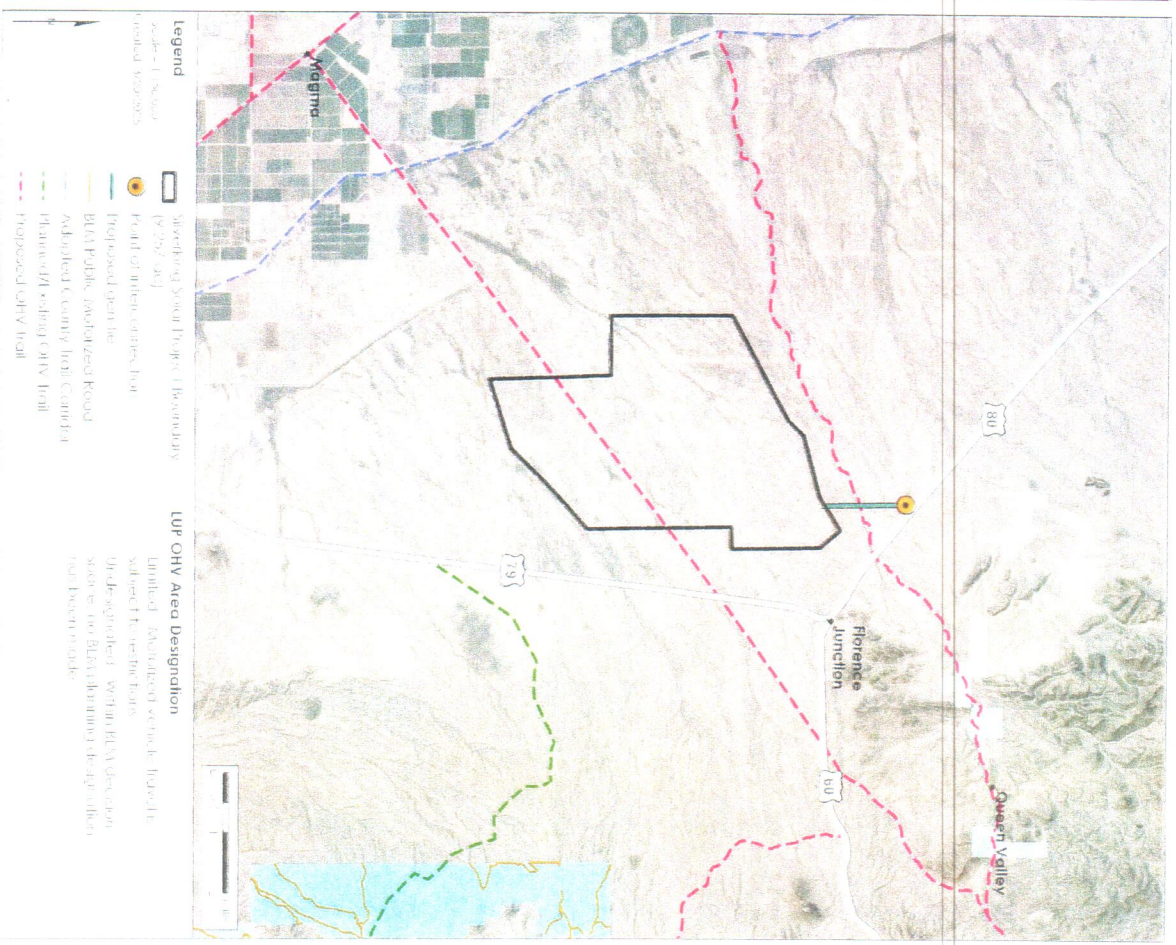
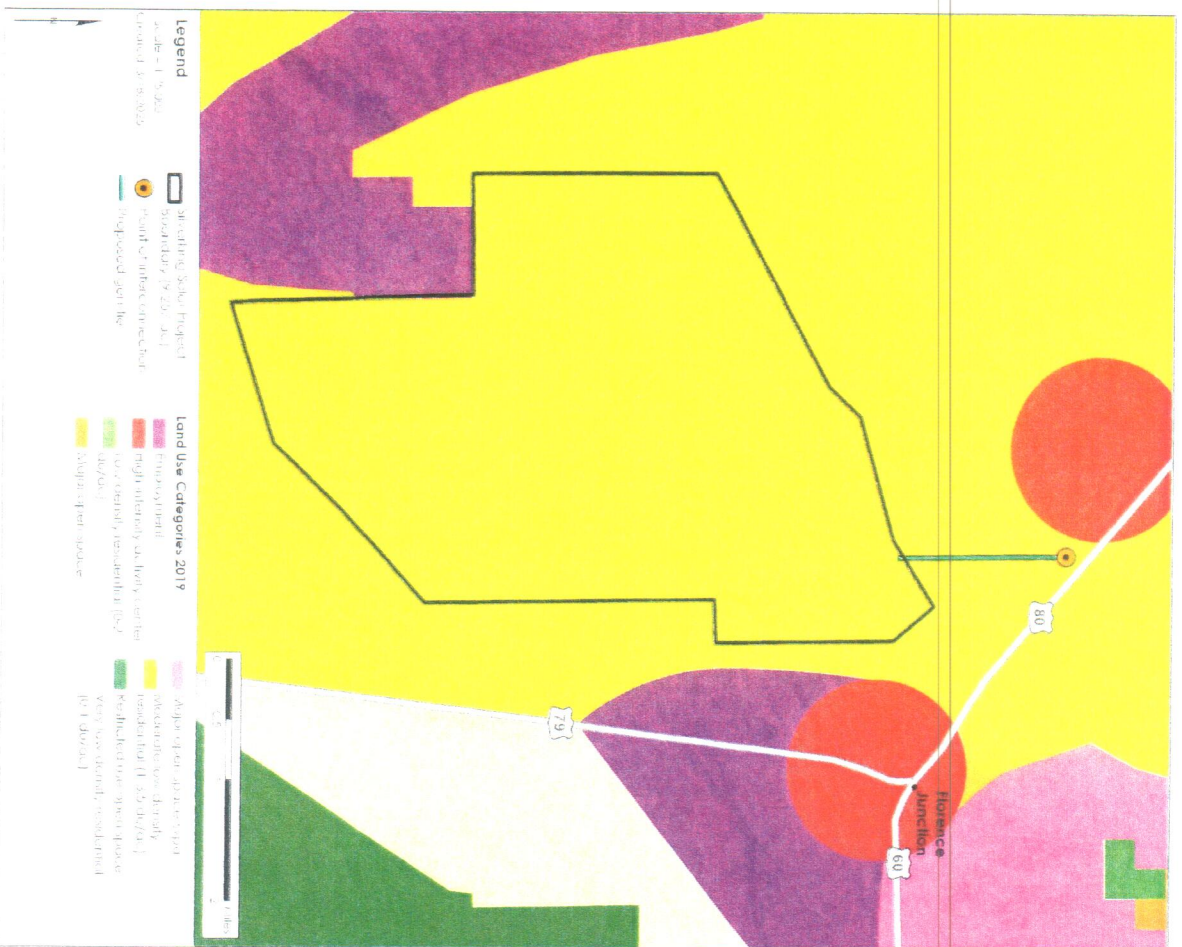
Dave Lundgren

DAVE@AREVIAPOWER.COM

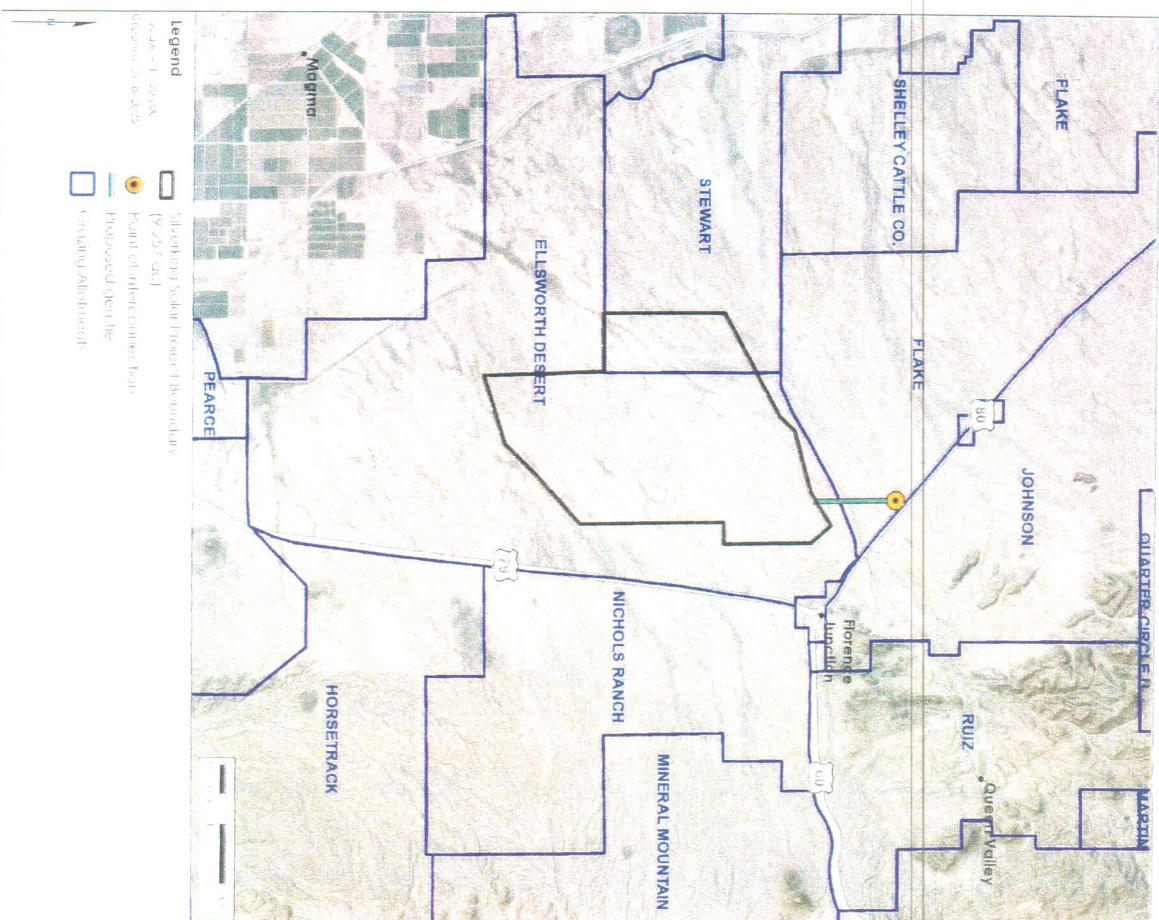
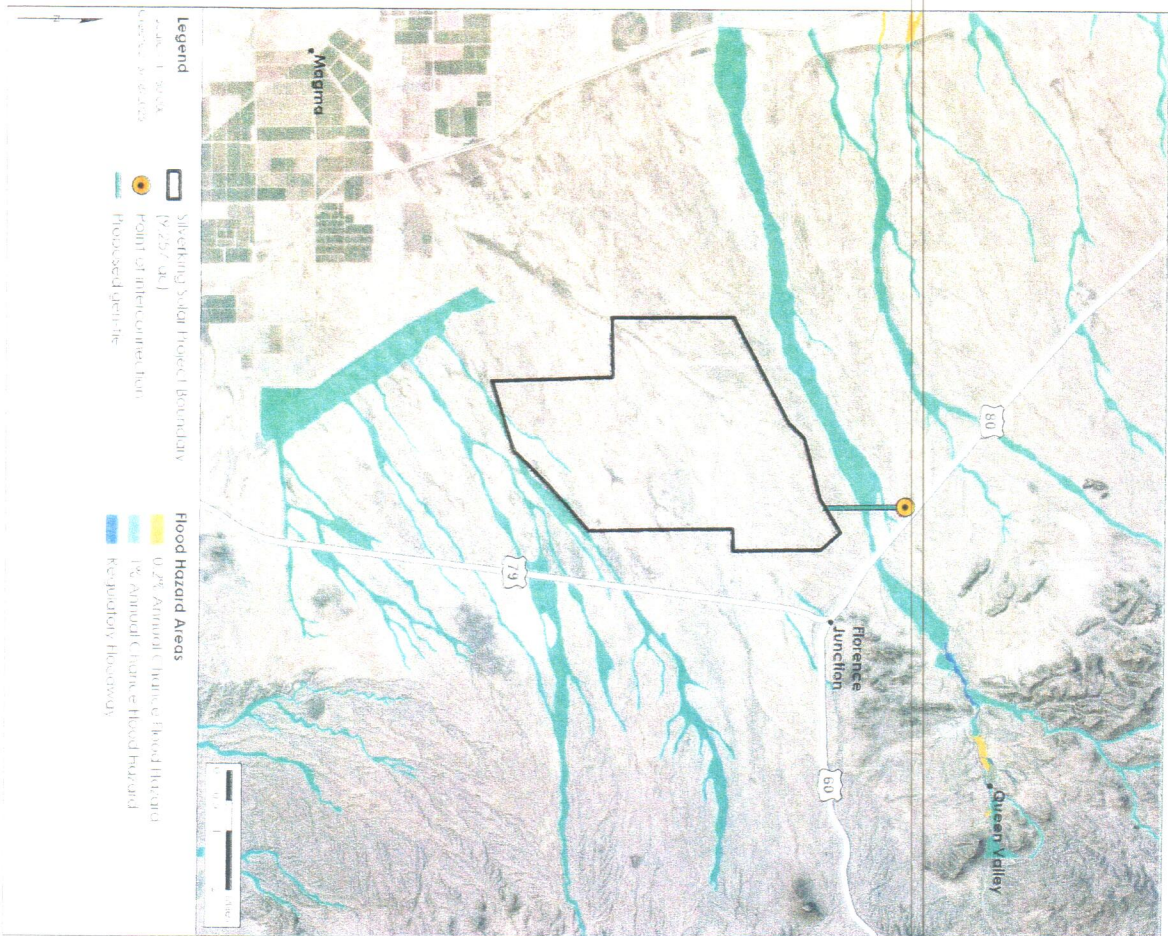
415-317-7450

APPENDIX

PINAL COUNTY LAND USE AND OHV



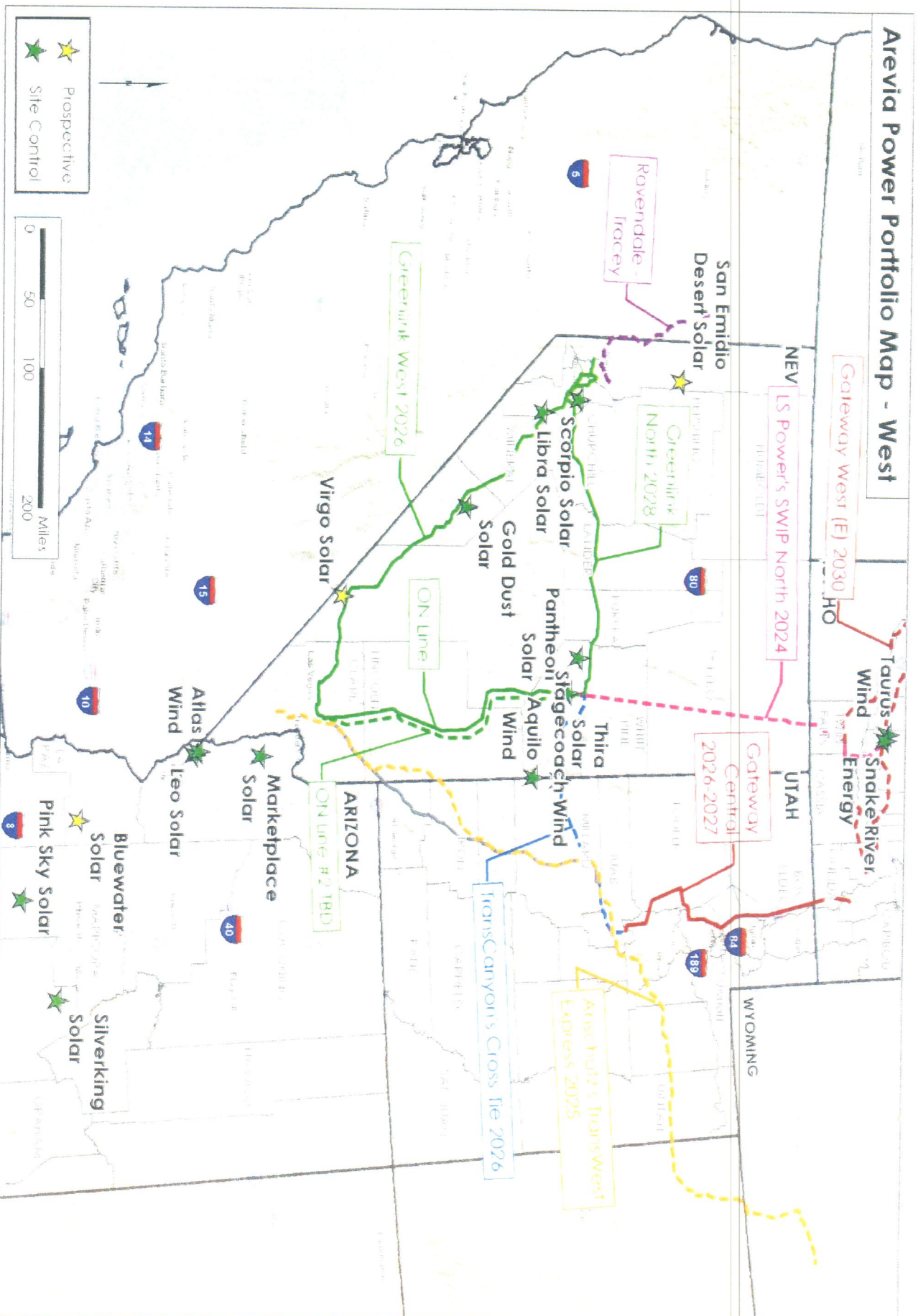
FLOOD HAZARD AND GRAZING



WESTERN PIPELINE



Arevia Power Portfolio Map - West



WHO WE ARE & HOW WE GOT HERE



Mark Boyadjian
Managing Partner



Ricardo Graf
Managing Partner

